

## GOAL 8 - RECREATIONAL NEEDS

### A. Introduction:

Hood River County is well endowed with natural features that are suitable for park and recreation development. These include the Columbia Gorge, Mt. Hood and wooded areas along Hood River tributaries. Opportunities abound for a wide variety of public and commercial recreation development.

### B. Inventory:

Map 1 shows in general recreational sites throughout Hood River County. Hood River has an abundance of natural and man-made recreation areas. In addition to sites and activities listed on the Recreational Resource Matrix (Tables 1, 2, and 3), which pertain to the City/Westside area; fishing, hunting, motor-bike riding, horseback riding, hiking, and bicycle riding are also available. Most of this activity is carried out at non-designated areas on private and public lands. There is also a nine-hole public golf course with adequate room to expand, and a private gun club located just north of Tucker Bridge.

Indoor recreation activities are available such as bowling, basketball, volleyball, gymnastics, and others. These are usually provided by the schools, Parks and Recreation Commission and various private groups. The School District sponsors various adult recreation and art classes throughout the year including tennis tournaments, exercise classes, pottery, etc. The Hood River Arts and Crafts Society promotes artistic development of all forms.

Hood River County maintains and operates a 26 acre park in the Central Valley area - Tucker Park. Tucker Park is a day use facility offering picnicking, fishing and general rest and relaxation. Sheltered barbecue areas are available and also an unimproved ball field. Access to the Hood River is excellent. The park formerly offered overnight camping, but the camping was discontinued 2½ years ago because of general rowdiness and law enforcement problems. Proposed future site improvements include upgrading the access to Highway 281 and the addition of another picnic shelter.

The Mt. Hood Towne Hall provides some recreational opportunities for local residents. The Towne Hall has tennis courts and a small indoor gymnasium. A nice front lawn provides a potential playfield area. The area has room for and need of a picnic shelter with barbecue facilities.

The U.S. Forest Service operates and maintains an improved recreational facility at Lost Lake west of Dee Flat. While Lost Lake lies just outside the area, access lies within and impacts the Valley area. Lost Lake offers overnight camping (80 sites), boat rentals, swimming, fishing and hiking.

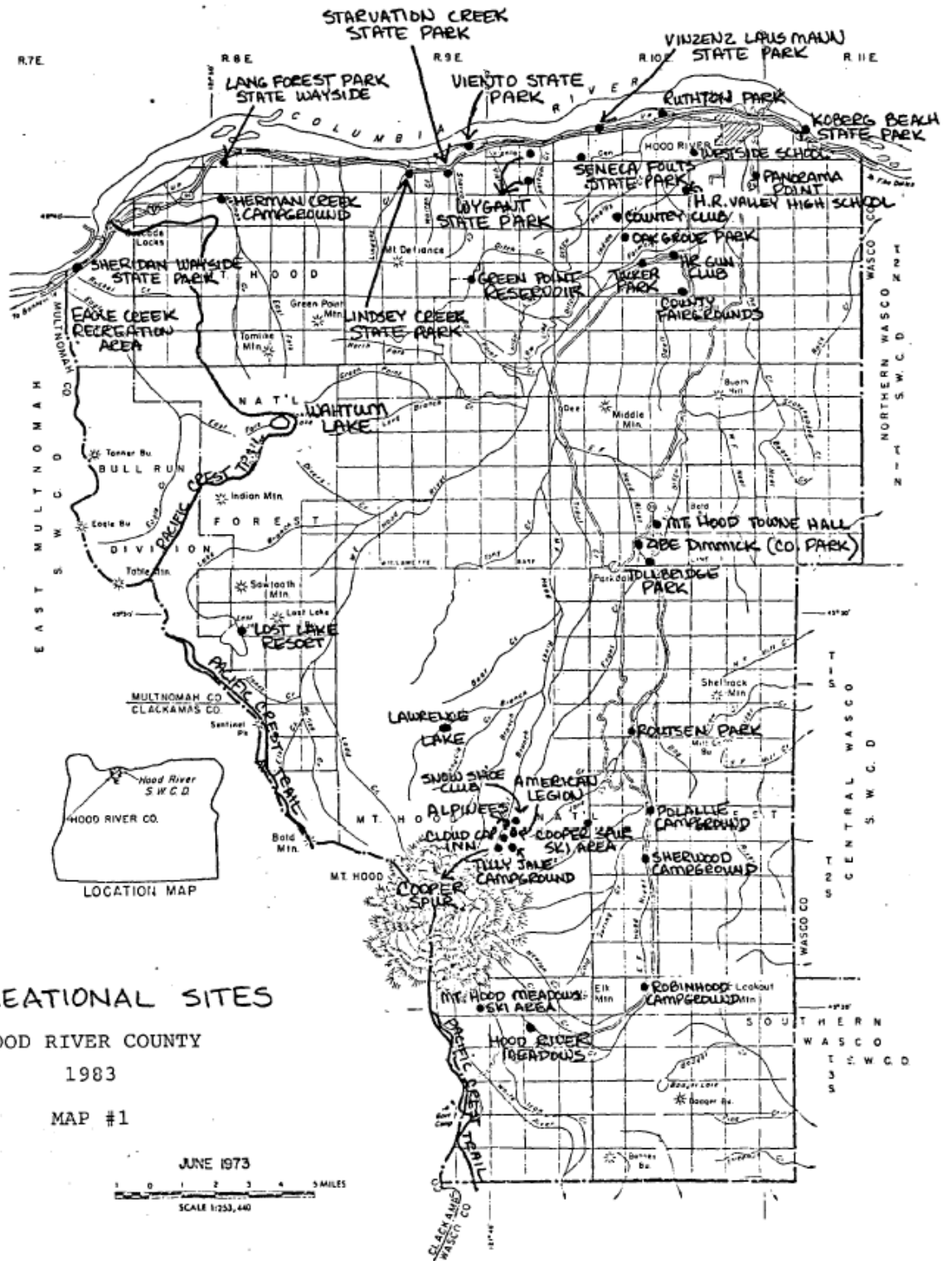


TABLE 1

SITE	CHARACTERISTICS															USER AGE GROUP	ACCESS MEANS	USER ORIGIN	SIZE (ACRES)		
	PARKING	PICNIC TABLES	TRASH CONTAINERS	BENCH	SIGN	PLAY EQUIPMENT	REST ROOMS	COOR. PATH	BALL FIELD	HORSE PIT	TENNIS COURT	BASKETBALL COURT	BOATINGS	SKATE PLAZA	TRAIL					OPEN PLAY AREA	VIEW POINT
M R LITTLE LEAGUE'S BALL FIELD	○	○	○	⊙/1	⊙/1	○	○	○	⊙/1	○	○	○	○	○	⊙/1	⊙/2	○	CHILD ADULT	FOOT BICYCLE AUTO	COMMUNITY NEIGHBORHOOD	8.2
WILSON PARK 3RD & MAY	○	⊙/1	⊙/1	○	⊙/1	⊙/2	○	○	○	○	○	○	○	⊙/1	⊙/2	⊙/2	○	CHILD YOUNG ADULT	FOOT BICYCLE AUTO	NEIGHBORHOOD COMMUNITY	1.2
SCHOOL PARK PARK & EUGENE	⊙/2	○	○	○	○	⊙/2	○	○	○	○	⊙/1	○	○	○	⊙/3	○	○	CHILD YOUNG ADULT	FOOT BICYCLE AUTO	COMMUNITY NEIGHBORHOOD	1.4
LIBRARY PARK STATE STREET	○	○	⊙/1	⊙/1	⊙/1	○	○	○	○	○	○	○	○	⊙/1	⊙/3	⊙/1	⊙/2	ADULT CHILD	FOOT BICYCLE AUTO	COMMUNITY NEIGHBORHOOD	.5
MAY STREET ELEMENT. SCHOOL	⊙/2	○	○	○	○	⊙/1	○	○	⊙/2	○	⊙/1	⊙/1	○	○	⊙/1	○	○	CHILD ADULT YOUNG	BKE BICYCLE AUTO	COMMUNITY NEIGHBORHOOD	2.7
ELIOT PARK INDIAN CADER	○	○	○	○	○	○	○	○	○	○	○	○	○	⊙/3	○	○	⊙/1	?	BICYCLE AUTO FOOT	?	27.3
RUTHVEN PARK WESTLAKE DRIVE	⊙/1	⊙/1	⊙/1	○	⊙/1	○	⊙/2	○	○	○	○	○	○	⊙/1	○	⊙/1	⊙/2	ADULT CHILD	AUTO BICYCLE FOOT	REGIONAL COMMUNITY	4.8
WESTSIDE ELEM. ELEMENTARY SCHOOL	⊙/1	○	⊙/1	○	○	⊙/1	○	○	○	○	⊙/2	○	○	○	⊙/1	⊙/1	○	CHILD YOUNG ADULT	BICYCLE FOOT AUTO	NEIGHBORHOOD COMMUNITY	12.0
M R VALLEY HIGH SCHOOL	⊙/1	○	⊙/1	⊙/1	○	○	○	○	⊙/1	○	○	○	○	○	⊙/1	⊙/1	⊙/1	YOUNG ADULT	AUTO FOOT BICYCLE	COMMUNITY NEIGHBORHOOD	15.0
OAK GROVE PARK	⊙/2	○	○	○	○	⊙/1	○	○	⊙/2	○	○	○	○	○	⊙/1	○	○	YOUNG CHILD ADULT	AUTO BICYCLE FOOT	COMMUNITY NEIGHBORHOOD	2
PANORAMA POINT PARK	⊙/1	⊙/1	⊙/1	○	⊙/1	○	⊙/1	○	○	○	○	○	○	○	○	⊙/1	○	ADULT CHILD	AUTO BICYCLE	REGIONAL COMMUNITY	15.0
KOEBERGS SPRING PARK	⊙/1	⊙/1	⊙/1	○	⊙/1	○	⊙/1	○	○	○	○	○	○	⊙/1	⊙/1	⊙/1	○	ADULT CHILD	AUTO	REGIONAL COMMUNITY	39.9
FOLIO STATE PARK						UNDEVELOPED															40.0

RECREATIONAL RESOURCE MATRIX  
JANUARY 1977

LEGEND

○ UNAVAILABLE

⊙/1-4 AVAILABLE

QUALITY RATING  
1-GOOD CONDITION  
2-FAIR CONDITION  
3-POOR CONDITION

USER AGE GROUP  
YOUNG-AGES 0-5 YEARS  
CHILD - " 6-11 "  
ADULT - " 12+ OVER

USER AGE GROUP  
ACCESS MEANS &  
USER ORIGIN  
- LISTED BY RANK ORDER

PARK SIZE IS GIVEN IN ACRES

PREPARED BY: PLANNING DEPARTMENT,  
HOOD RIVER COUNTY

TABLE 1

TABLE 2

CHARACTERISTICS SITE	PARKING	PICNIC TABLES	TRASH CONTAINERS	SEENGA	SWIM	PLAY EQUIPMENT	REST ROOMS	COCKING PIT	BALL FIELD	LEISURE PIT	TENNIS COURT	BASKET-BALL COURT	BOUNTING	SWIMMING	TENNIS PATH	ORCH PLAY AREA	VIEW POINT	PROBAB AREA	USER AGE GROUP	ACCESS MEANS	USER ORIGIN	AREA SIZE
13 <sup>th</sup> & OAK PARK	2/2	1/1	1/1	1/1	0	0	0	0	0	0	0	0	0	0	0	2/2	1/1	0	YOUNG CHILD ADULT	FOOT BICYCLE AUTO	NEIGHBORHOOD COMMUNITY	.5
MORRISON PARK WOODS & SPRING	3/3	0	0	0	2/2	0	0	0	0	0	0	0	0	0	2/2	3/3	2/2	1/1	CHILD ADULT	AUTO BICYCLE FOOT	?	5.5
MANN PARK EDGEMORE, 22 <sup>nd</sup> ST	0	0	1/1	0	3/3	1/1	0	0	0	0	0	0	0	0	1/1	0	0	0	YOUNG CHILD ADULT	FOOT BICYCLE AUTO	NEIGHBORHOOD COMMUNITY	1.0
COLLINS MEMORIAL PARK	1/1	0	1/1	0	1/1	1/1	0	0	1/1	2/2	0	0	0	0	1/1	0	0	0	CHILD ADULT YOUNG	AUTO BICYCLE FOOT	COMMUNITY NEIGHBORHOOD REGIONAL	2.0
JACKSON PARK	1/1	1/1	1/1	0	1/1	1/1	1/1	1/1	0	0	0	0	0	0	1/1	0	1/1	1/1	ADULT CHILD YOUNG	AUTO BICYCLE FOOT	COMMUNITY NEIGHBORHOOD	3.8
MAN STREET JR. HIGH SCHOOL	1/1	0	0	1/1	0	0	0	0	1/1	0	1/1	1/1	0	0	1/1	0	0	0	CHILD ADULT YOUNG	BICYCLE FOOT AUTO	COMMUNITY NEIGHBORHOOD	1.2
15 <sup>th</sup> & MONTBLO PARK	0	0	0	0	0	0	0	0	0	0	0	1/1	0	0	1/1	0	2/2	0	CHILD YOUNG ADULT	FOOT BICYCLE AUTO	NEIGHBORHOOD COMMUNITY	1.2
WINANS PARK 3 <sup>rd</sup> & SHERMAN	0	0	0	2/2	3/3	0	0	0	0	0	0	0	0	1/1	3/3	1/1	2/2	ADULT CHILD	FOOT BICYCLE	?	.5	
DR. MARINA PARK	1/1	1/1	1/1	0	0	0	1/1	1/1	0	0	0	0	1/1	3/3	1/1	1/1	1/1	0	ADULT CHILD	AUTO BICYCLE	COMMUNITY REGIONAL	2.2
HOOD RIVER POOL	1/1	0	1/1	0	1/1	0	1/1	0	0	0	0	0	1/1	0	0	0	0	0	YOUNG ADULT CHILD	AUTO BICYCLE FOOT	COMMUNITY NEIGHBORHOOD REGIONAL	1.5

RECREATIONAL RESOURCE MATRIX  
JANUARY 1977

LEGEND

○ UNAVAILABLE

○/1- AVAILABLE

○/1- QUALITY RATING

1-GOOD CONDITION  
2-FAIR CONDITION  
3-POOR CONDITION

USER AGE GROUP

YOUNG - AGED 0-5 YEARS  
CHILD - " 6-17 "  
ADULT - " 18+ OVER

USER AGE GROUP ACCESS MEANS & USER ORIGIN

- LISTED BY RANK ORDER

PARK SIZE IS GIVEN IN ACRES

TABLE 2

TABLE 3  
EXISTING PARKS & RECREATION SITES  
 City/Westside Area

PARK SITE	COMMENTS, NEEDS
13th & Oak Park	<ul style="list-style-type: none"> <li>- Needs berm and/or more shrub landscaping in NW corner to reduce noise.</li> <li>- Needs bark mulch or sawdust on exposed soils.</li> <li>- Needs park name and sign of such.</li> </ul>
Morrison Park (Wasco & Jaymar Road)	<ul style="list-style-type: none"> <li>- Need improved graveled parking area.</li> <li>- Needs sign on Cascade Street directing traffic to park.</li> <li>- Needs improved trail definition.</li> <li>- Clear some areas for "blanket picnicking".</li> <li>- Retain natural character of the site.</li> </ul>
Mann Park (Eugene & 24th)	<ul style="list-style-type: none"> <li>- Needs a bench near play equipment.</li> <li>- Needs bark mulch or sawdust for exposed soils.</li> </ul>
Collins Memorial Park (May Street & 13th)	<ul style="list-style-type: none"> <li>- Needs benches near play equipment on west side.</li> </ul>
Jackson Park (May Street & 13th)	<ul style="list-style-type: none"> <li>- Needs benches near play equipment on east side.</li> </ul>
May Street Jr. High School	<ul style="list-style-type: none"> <li>- Maintain existing quality.</li> </ul>
13th & Montello Park	<ul style="list-style-type: none"> <li>- Maintain existing quality.</li> </ul>
Winans Park (Sherman & 2nd)	<ul style="list-style-type: none"> <li>- There is a small "pocket park" on the Sherman Street side of the site. The flat site to the north is well suited for a downtown park. It has an excellent view, stairway access from State Street and can be used as a lunchtime "retreat" for downtown workers. Benches and a grass turf should be provided at this site.</li> <li>- The small "pocket park" on Sherman Street appears neglected and not well used.</li> </ul>
Port Marina Park	<ul style="list-style-type: none"> <li>- Improve beach area on north side for swimming.</li> </ul>
Hood River Pool (18th & May)	<ul style="list-style-type: none"> <li>- Because of present condition, construct new pool with cover.</li> </ul>
Wilson Park (End of May Street)	<ul style="list-style-type: none"> <li>- Needs a bench near play equipment.</li> <li>- Needs additional landscaping at east end of site.</li> </ul>

PARK SITE	COMMENTS, NEEDS
School Park (Park & Eugene)	<ul style="list-style-type: none"> <li>- Needs a bench near play equipment.</li> <li>- Needs bark mulch or sawdust for exposed soils.</li> </ul>
Library Park (at County Library)	<ul style="list-style-type: none"> <li>- Maintain existing quality.</li> </ul>
May Street Elem. School	<ul style="list-style-type: none"> <li>- Maintain existing quality, upgrade tennis-court surface.</li> </ul>
Eliot Park (lower Indian - Creek, in City limits)	<ul style="list-style-type: none"> <li>- Develop bike/walking trail on north side of Indian Creek.</li> <li>- Retain natural character of the site.</li> </ul>
Ruthton Park (west end of Westcliff Drive)	<ul style="list-style-type: none"> <li>- Encourage the State Highway Department to provide a directional sign on I-84. This site, with the viewpoint and picnic tables, provides a good highway rest area.</li> <li>- Obtain a 25 year lease from the State Highway Dept.</li> </ul>
Westside Elem. School	<ul style="list-style-type: none"> <li>- Maintain existing quality.</li> </ul>
H. R. Valley High School	<ul style="list-style-type: none"> <li>- Maintain existing quality.</li> </ul>
Oak Grove Park	<ul style="list-style-type: none"> <li>- Needs a sign.</li> <li>- Needs a bench near play area.</li> </ul>
Panorama Point (off Eastside Road)	<ul style="list-style-type: none"> <li>- Maintain existing quality.</li> </ul>
Koberg Beach State Park (at Rest Area on Interstate 84 approx- imately two miles east of Hood River)	<ul style="list-style-type: none"> <li>- This park is actually a highway rest area in transition to a park.</li> <li>- There is no access from eastbound I-80N.</li> <li>- Maintain swimming and picnicking area.</li> </ul>
Fouts State Park (off Interstate 84 approximately four miles west of Hood River)	<ul style="list-style-type: none"> <li>- This site is undeveloped.</li> <li>- Its natural character should be retained and viewpoints of the Gorge should be developed.</li> <li>- Provide hiking trails and access.</li> </ul>

Lost Lake Resort has a permit to rent boats, canoes, and cabins to those who patronize the area. The resort has proposed a new building and relocation of the present facilities a short distance from the present facilities.

The present facilities at the Lost Lake recreational area are used beyond capacity during the summer months. Weekend campers are regularly turned away because all existing campsites are full. Dee Flat residents have concerns about the amount of traffic this resort and recreational area is generating. There is also some concern about the possibility of the new resort having a license to sell alcoholic beverages.

The area is rich and abundant in the amount of hiking trails meandering through the area. The famous Pacific Crest National Scenic Trail traverses the County in a north to south direction. The State Parks Branch would like to see a land use designation and zoning which is compatible with this kind of use.

The U.S. Forest Service is presently working with several horseback riding clubs who want to develop a horse camp at Gibson Prairie on the eastside above Neal Creek. The Forest Service is supplying the materials and the horse groups the labor for this joint effort.

The Oregon State Parks Branch would like counties to recognize the need for a local recreation trail system for hiking, bicycling and horseback riding. The possibility exists that local systems might be tied in with the long range State Recreation Trails System.

All of the schools located in the Central Valley area have some outdoor recreational facilities for children. These facilities range from ball fields to playground swings.

Odell lacks adequate parks and recreation facilities. School playgrounds provide the main area for recreation in the area. Odell needs a park of some kind to meet the recreational needs of the growing Odell population. A park and related recreational facilities could be constructed at the Hood River County Fairgrounds.

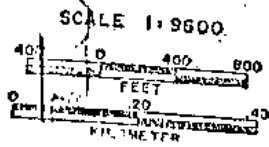
What was called "Ziba Dimmick State Wayside" was purchased by the County in 1980 after the flood of that year buried it under sand and gravel. It is located on Cooper Spur Road where it crosses the East Fork Hood River, about  $\frac{3}{4}$  mile southwest of the town of Mt. Hood (T1N-R10E Section 33, tax lots 400 and 1000). (See Map #2.)

The Park was formerly used as a picnic/day use area. The County is currently in the process of clearing away the sand, which is used for other County projects and in the future plans to renovate the picnic/day use facilities and add a softball field and horse trails. Work is not expected to be completed for several years, as only preliminary cleanup work has begun.

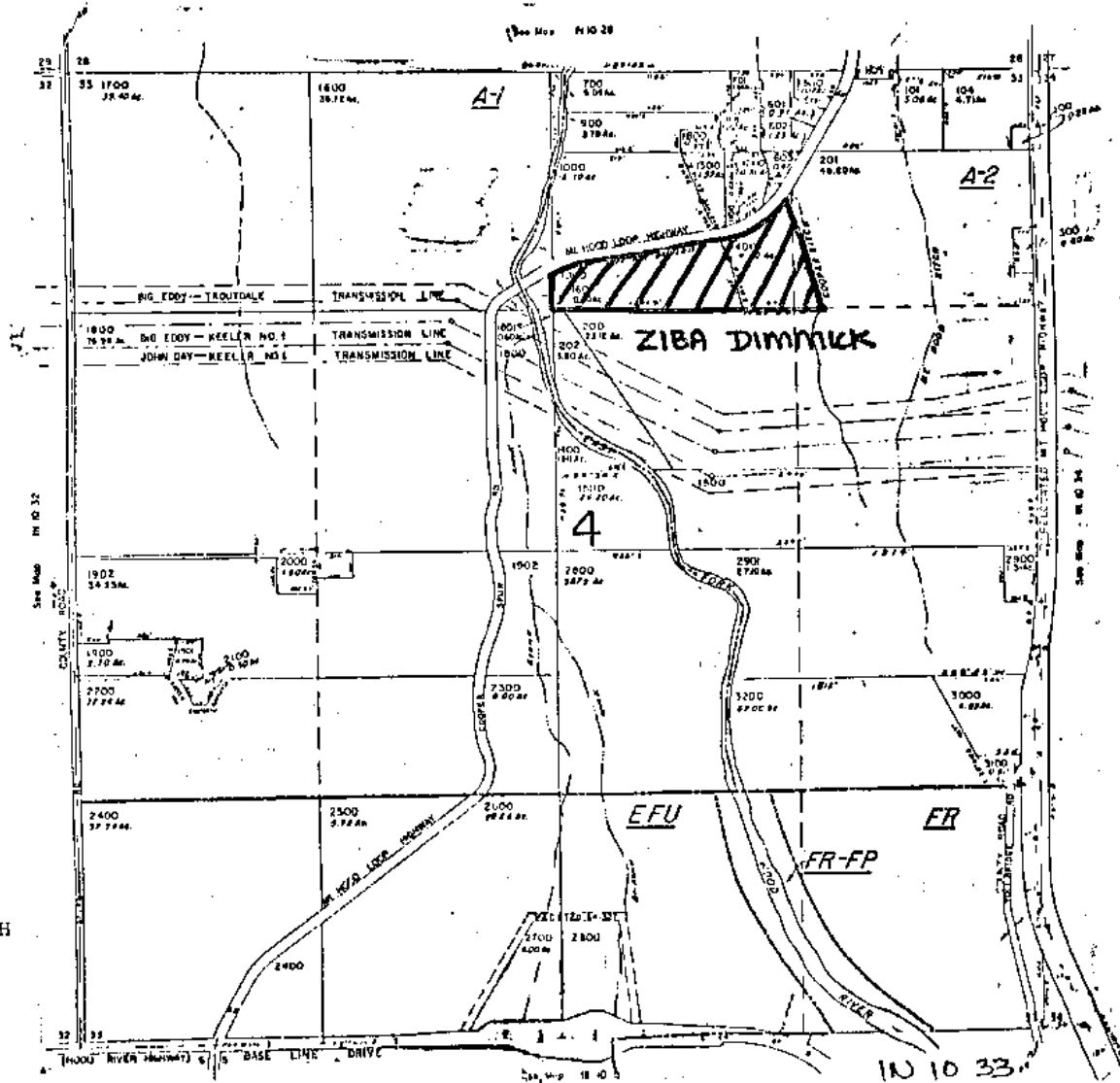
Section 33 TIN RIDE WM  
Hood River County  
T. 40N

W 10 33 1

Cancelled No's  
103  
400  
1101  
1102  
102



MAP #2 - ZIBA DIMMICK PARK





At the present time, the Columbia Gorge offers many passive recreational opportunities such as sightseeing, hiking, boating (see Table 4).

Recreational development is currently limited to picnic areas, small campgrounds, trails, trail head parking lots, and boat ramps. All are publicly owned. There are no hotels, large campgrounds, marinas, developed roadside attractions, or recreational housing subdivisions.

An estimated eight million people visit the Columbia Gorge each year (State Highway Division Traffic County Data Sheet). Although many pass through only to utilize the transportation facilities, others visit merely to enjoy the scenic open space.

Though no commercial institutions survive from the tourist trade; many motels, restaurants, and other establishments adjacent to the area depend on the Gorge traffic for their livelihood.

The United States Forest Service has a land-use plan for the Gorge that includes two designations: A Wilderness Study area in the higher elevation portion of the Gorge, and a Special Interest Zone-Scenic designation in the lower elevations. In the Wilderness Study designation, no timber cutting is permitted. In the Special Interest Zone-Scenic designation, timber cutting is limited to developing new viewpoints, developing campgrounds and helispots, and in some cases timber salvage after forest fires or insect damage. The primary objective of these designations is scenic protection for recreation and tourism (United States Department of Agriculture, Eagle Creek Planning Unit Final Environmental Statement, 1975).

County. and privately owned recreational sites are listed in Table 5.

General recreation objectives, policies, etc., regarding recreational uses in the Mt. Hood area have been consolidated and added to the County Policy Document. Other concerns include:

1. County Parks and Recreation: The County has a definite interest not only in providing parks for local citizens but also in establishing recreation as a strong local industry.
2. Existing Facilities: The County park system is presently comprised of \*nine parks. The location, existing facilities, and expansion potential of each of those in the Mt. Hood area are summarized as follows:

---

\* The other County parks are located outside of the Mt. Hood area (see Table 5).

TABLE 4 – COLUMBIA GORGE

Eagle Creek	Federal	xx	xx	xx	xx	xx	xx	xx	xx	xx	xx	
Herman Creek	Federal	xx				xx		xx		xx	xx	
Lang Forest Park State Wayside	State											
Vencent Lauzman State Park	State								xx			
Lindsey Creek State Park	State											
Seneca Fouts State Parks	State											
Sheridan Wayside State Park	State	xx										
Starvation Creek Wayside	State	xx										
Viento State Park	State	xx										
Wygant State Park	State	xx										
	Ownership	Picnic Area	Piped Water	Shelter	Trailer Camping	Fishing	Hiking	Stream	Viewpoint	Toilet	Tent Camp	Utility Buildings

TABLE 4 – COLUMBIA GORGE

COUNTY & PRIVATELY OWNED RECREATIONAL SITES

	<u>T</u>	<u>R</u>	<u>S</u>	<u>Tax Lot #</u>	<u>Ownership</u>	<u>Current Plan Designation &amp; Zone</u>
1. County Fairgrounds	2N	10	22	2200	County owned	FAIRGROUND/EFU
2. Ruthton Park	3N	10	27C	SW Corner	Leased from State	PARK/C1
3. Panorama Point	2N	11	6	1400	County owned	PARK/EFU
4. Routson Park	1S	10	29	500	County owned	FR-PARK/FR
	1S	10	30	600		
				SW Corner		
5. Tucker Park	2N	10	15	2500, 2600	County owned	FARM/EFU
6. Dimmick Park	1N	10	33	400, portion of 1000	Just purchased from State – not currently in use	FARM/EFU
7. Oak Grove Park	2N	10	16	3501, 3801	County owned	PARK/RC
8. Tollbridge Park	1N	10	33	3200	County owned	FR-EP-PARK/FR-FP
	1S	10	5	100		
9. Kingsley	2N	9	22	---	Proposed county ownership	FR/FR
10. County Line Park	3N	11	33	---	County owned proposed	FR-CG/FR-CG
	3N	11	34	---	archery range	
11. Hood River Gun Club	2N	10	15	3800	Private ownership	EFU/FR
12. Mt. Hood Towne Hall	1N	10	27	2100	County owned	C-1/C-1
13. Country Club	2N	10	8	All SE ¼	Private ownership	CC/CC
14. Westside School	3N	10	35	801	County owned	SCHOOL/R-1-7000
15. Hood River High School	2N	10	3D	100, 600, 800, 900	County owned	SCHOOL/EFU-FR-FP

Shows only County and private recreation sites – State and Federal Parks & Trails not shown – Privately owned structures on public lands not shown.

- a. Routson Park: This park is located five miles south of Parkdale on the Mt. Hood Loop Highway. Situated next to the East Fork of the Hood River, the park provides an access point and parking area for "anglers". At present the park has sites for either tent camping or picnicking and restrooms. Future plans include additional camping sites on the slope above the present tent area and a caretaker's cottage. The area adjoining the river also provides an area for future picnic facilities.
- b. Tollbridge Park: This park is located 1½ miles east of Parkdale along the Mt. Hood Loop Highway. Situated next to the East Fork of the Hood River, it also provides an access point and parking area for "anglers". Present facilities include a picnic area with tables, camping spaces for trailers, restrooms and showers, and a caretaker's cottage. Future plans include an area for large group picnics, playground equipment, a playfield and an area for tent camping.

Overall, a variety of recreational opportunities are available to Hood River County residents, from neighborhood "mini parks" to large multi-purpose areas within a short driving distance (Mt. Hood).

C. Recreational Needs:

The Statewide Comprehensive Outdoor Recreation Plan (SCORP) used the County and statewide surveys to determine recreational needs and demand (see Tables 6 and 7); and used the figures to project recreational needs to the year 1990 (see Table 7). From Table 8, it is shown that the yet unmet recreational needs in Hood River County include: campsites, biking trails, tennis and all purpose courts, off-road vehicle trails, golf courses, and neighborhood and community parks.

The SCORP has also identified "special area needs" (p. 5.52). These are listed below:

1. Access to fishing areas (parking, bank access, public piers, etc.);
2. Target ranges for various types of firearms and archery;
3. Wilderness, natural areas, and nature preserves in critical resource areas, especially at low altitudes and near population centers;
4. Archeological sites;
5. Historic areas and structures; and
6. Parking spaces for snowmobiling and cross-country skiing.

TABLE 6  
LIST OF COUNTY RECREATION EXPRESSED NEEDS  
AUGUST, 1977

Hood River County

- Indoor pools
- Walking trails
- Bike trails
- Ballfields
- Golf courses
- Tennis courts
- ORV trails and areas
- Boat launch lanes
- Campsites away from  
Interstate 80
- Access to Columbia River
- Neighborhood parks
- Community parks
- District parks
- All-purpose courts

Source: Oregon State Parks and Recreation Branch, Dept. of Transportation, Oregon Statewide Comprehensive Outdoor Recreation Plan (SCORP), (Fourth Edition, 1978), Appendix C.

TABLE 7

HOOD RIVER, WASCO & SHERMAN COUNTIES

DISTRICT IX  
 OUTDOOR RECREATION DEMAND \*  
 Recreation Data Subcommittee  
 PNWRBC

<u>Activity</u>	<u>1975</u>	<u>1980</u>	<u>1990</u>	<u>2000</u>
Camping	1,115,300	1,225,900	1,454,500	1,624,200
Picnicking	428,300	458,200	527,800	576,300
Swimming Pool	361,280	369,680	406,080	431,680
Non-pool	90,320	92,420	101,520	107,920
Sightseeing	1,598,700	1,718,600	2,033,600	2,240,000
Fishing	332,300	345,900	385,900	411,500
Boating	113,100	142,200	169,100	188,100
Water Skiing	71,500	78,100	90,600	102,000
Walking & Hiking	1,641,100	1,731,900	1,943,800	2,085,600
Hunting	154,800	171,700	198,900	215,500
Outdoor Games	302,100	318,000	352,500	371,800
Bicycling	278,000	290,600	319,600	338,200
Golfing	79,700	87,000	101,000	110,300
Horseback	69,800	74,600	87,800	94,000
Cultural Events	273,500	286,200	324,200	345,700
Snow	447,400	501,400	604,100	688,100
Other	1,841,000	2,039,900	2,422,500	2,647,700

\* Activity occasions generated

Source: Oregon State Parks and Recreation Branch, Dept of Transportation  
Oregon Statewide Comprehensive Outdoor Recreation Plan (SCORP), (Fourth  
 Edition, 1978) p. 5.16

TABLE 8

Hood River County Needs

Facility	Unit	Supply	Gross Need	Net Need		
				1975	1980	1990
Campsites	Site	<u>427</u>	<u>1,024</u>	597	700	908
Picnic Tables	Table	297	215	(82)	(68)	(34)
Swimming Pools	Pool	1	1	0	0	0
Boat Launch Lanes	Lane	7	1	(6)	(5)	(5)
Swim Beach	Feet	1,280	193	(1,087)	(1,080)	(1,056)
Walking & Hiking Trails	Mile	47	47	0	3	9
Biking Trails	Mile	<u>1</u>	<u>4</u>	3	3	4
Bridle Trails	Mile	36	3	(33)	(33)	(33)
Ball Fields	Field	12	6	(6)	(6)	(5)
Tennis Courts	Court	<u>5</u>	<u>6</u>	1	1	2
All Purpose Courts	Court	<u>3</u>	<u>6</u>	3	3	4
ORV Trails	Mile	<u>0</u>	<u>2</u>	2	3	3
Golf	Holes	<u>9</u>	<u>18</u>	9	9	9
Neighborhood Parks	Acres	<u>19.0</u>	<u>71.5</u>	52.5	54.5	62.5
Community Parks	Acres	<u>27.0</u>	<u>143.0</u>	116.0	120.0	136.0
District Parks	Acres	493.0	214.0	(279.0)	(272.5)	(244.5)
Regional Parks	Acres	933.0	358.0	(575.0)	(566.0)	(526.0)

Source: Oregon State Parks and Recreation Branch, Dept. of Transportation,  
 Oregon Statewide Comprehensive Outdoor Recreation Plan (SCORP), (Fourth  
 Edition, 1978). Appendix C.

Any of the recreational needs identified in the SCORP could be met by the Mt. Hood area. The area currently provides wilderness, natural areas and native preserves near population centers, historic areas and structures, access to fishing areas and parking for snowmobiling and cross-country skiing, campsites, and off-road vehicle trails. No needs are identified for other snow related recreational facilities or recreational housing. Identified recreational needs in the Mt. Hood area include off-road parking for hikers, cross-country skiers, etc., campgrounds and picnic areas, trails, parks, golf courses and visitor centers noted in the previous Mt. Hood Plan. All these uses could be permitted either outright or with a Conditional Use Permit on either private or Federal lands in the FR, EFU, or RR Zones.<sup>1</sup> The FR designation states that developments must be limited to those compatible with forest management, i.e., hunting, camps, day use facilities. Golf courses are currently permitted as conditional uses in the RR Zone and are a permitted use under 215.213 in an EFU Zone, although they are not specifically mentioned in the County EFU Zone.

Needs expressed in the SCORP that could be met in the Columbia Gorge area include: campsites, biking trails, off-road vehicle trails, community parks, access to fishing areas, wilderness and natural areas, and archaeological sites. Any of these uses could be allowed in the Scenic Protection Zone as long as they would not adversely affect the scenic qualities of the Gorge. Other needs expressed in the SCORP (Table 6) that analysis shows have been adequately met (Table 8) are uses associated with the Columbia River, such as boat launch lanes and other accesses to the river.

Identified recreational needs for the Columbia Gorge area include: bridle paths, bicycle and hiking trails, trailheads with corrals and other equestrian facilities, campgrounds, and educational and recreational centers. The Scenic Protection Zone, which applies to the entire Columbia Gorge area, permits each of these uses as long as they do not seriously interfere with the natural character of the Gorge or conflict with outdoor recreational activities in the Gorge (Zoning Ordinance, Section 53.20).

The Hood River County Parks Committee has communicated several concerns they wish to have considered in the development of the new Comprehensive Plan for the Central Valley area. These include:

1. If and when the Green Point Reservoir is enlarged to augment irrigation water supplies for the Farmers Irrigation District, the recreational possibilities for the Reservoir should be included in the Plan.
2. The provision of bridle paths along Wyeast, Summit, Lippman, and Canyon Roads should be considered.
3. Additional viewpoints and bicycle routes should be designated (Source: Department of Public Works letter re. County Parks Committee, 5/18/78.)

---

<sup>1</sup> U.S.F.S. – Gresham Office, phone conversation 8/31/82.



The construction of bicycle paths and lanes through the Valley is needed. A bike trail system between Wyeast School and Odell is highly desirable and should be constructed because of the traffic safety problems encountered by students using the county roads between the two areas.

The crushing and destruction of irrigation pipes in the orchards by adolescents riding motorbikes is recognized as a problem by many orchardists. Adolescent motorbikers cannot legally drive on public roads and therefore choose to use orchard lands for bike routes.

Horseback riding is a popular recreational pursuit in the valley. Horseback riding trails should be established in strategic locations as indicated by the Hood River County Parks Committee recommendations found in this background section.

The need for an all-weather swimming pool for Hood River County has been discussed for a number of years. Considerable support exists in the valley for building a facility of this kind. Possible locations for the pool include the present pool site in Hood River, the high school grounds or the fairground in Odell. Recent communication with the Bureau of Outdoor Recreation personnel indicate that matching funds may be available for construction costs.

If and when the Green Point Reservoir is constructed, various recreational facilities should be built. At a minimum, boat launching and day use picnic facilities should be constructed. Overnight camping facilities might also be considered.

D. Policies, Strategies, etc.:

The following are recommended to be included in the County Policy Document under Policies and Strategies:

1. The County will coordinate with public agencies in the management of public lands.
2. The County will not require planning permits for activities on public lands but may request the opportunity for review and comment on all proposals on public lands in the County. County Building Permits could, however, be required by the Building Official.
3. Normal maintenance, rehabilitation, replacements, minor betterment, repair improvements, and other similar construct activities (as determined by the Planning Director) on State, County and Federal parks shall be exempted from the requirement of acquiring a Conditional Use Permit.

E. Golf Course:

The Hood River Golf Course is considered a recreational activity.

As discussed above, the Statewide Comprehensive Outdoor Recreation Plan (SCORP) determines that the yet unmet recreational needs in Hood River County include, among others, golf courses.

The process for justifying the Golf Course Exception Area is outlined in the County Exceptions Document under Map #40.

F. Conclusions and Observations: Findings:

1. The Central Valley offers a variety of outdoor recreational opportunities.
2. Tucker Park recreational opportunities should be increased at a minimum to include a ball field and additional picnic areas.
3. Odell needs a neighborhood park offering a variety of recreational opportunities.
4. The Mt. Hood Towne Hall could use an outdoor picnic shelter. Construction of a ballpark might also be appropriate.
5. The Lost Lake recreational facilities are used beyond capacity during the summer months.
6. A recreational trail system for bicycling, hiking and horseback riding is needed in the Central Valley area.
7. Recommendations should be made concerning the type and extent of recreation facilities desired for the new Green Point (Kingsley) Reservoir.
8. A Recreational Resource Matrix which contains a list of existing park sites, activities and site use, access, and size was developed.
9. The vacant City property located south of the swimming pool would be excellent as a location for a community center building and could be funded by the EDA and/or HUD Community Block Grant funds.
10. People in low-income groups (below \$5,000) walk to work, parks, and to shopping areas more than any other income group.<sup>2</sup>
11. Persons who live in communities with a population between 5,000 and 25,000 participate in outdoor recreation more often than residents in any other size community.<sup>3</sup>

---

<sup>2</sup> The State Comprehensive Outdoor Recreation Plan, 1972.

<sup>3</sup> Ibid

12. Pleasure driving and sightseeing are popular activities and are more appropriately provided by the State through their highways program.
13. Swimming, tennis, baseball, picnicking, bike riding and other active pursuits are the most popular activities in the area.
14. There is a need for a community center to house indoor activities for young and elderly residents (see item 9 above).
15. The impending Bonneville Pool level fluctuation and rising pool level will inundate parts of the Koberg Beach Swimming Area and the Port of Hood River's beach north of the picnic park area.
16. There is a need to provide bikeways of at least Class 3 in strategic locations within the community. (For a description of bike-path types, see Transportation.)
17. The overall level of park quality and activities available is inadequate.
18. The Bureau of Outdoor Recreation (BOR) classification of park land in the City/Westside area is as follows: Class 1 (urban) = 28 acres; Class 2 (semi-developed) = 84 acres; Class 3 (non-developed except trails) = 40 acres; Class 4 (natural areas) = 38 acres. (Note: This does not include State and County forest lands or Hood River Gorge lands.)<sup>4</sup>
19. Bikeways and walkways are an important part of recreation; however, these topics are addressed in the Transportation Section.
20. Add additional policies, strategies, etc., noted in Section "D" in the County Policy Document.

---

<sup>4</sup> Ibid

## GOAL 8 – RECREATIONAL NEEDS: WELLS ISLAND:

For further detailed discussion regarding Wells Island, see Goal 5 Evaluation Fish & Wildlife Areas and Habitats; Wells Island, within this Background Report. The following report pertains to Goal 8 and is included at APPENDIX “C” to this Background Report: Findings of Fact, Growth of Board Sailing in Hood River.

Furthermore, the following Strategy will be included in the County’s Policy Document under Goal 8 – Recreational Needs:

“The County supports the City of Hood River’s Findings of Fact, Growth of Board Sailing in Hood River, as contained in the County Background Report under Goal 8 – Recreational Needs (Appendix “C”).”